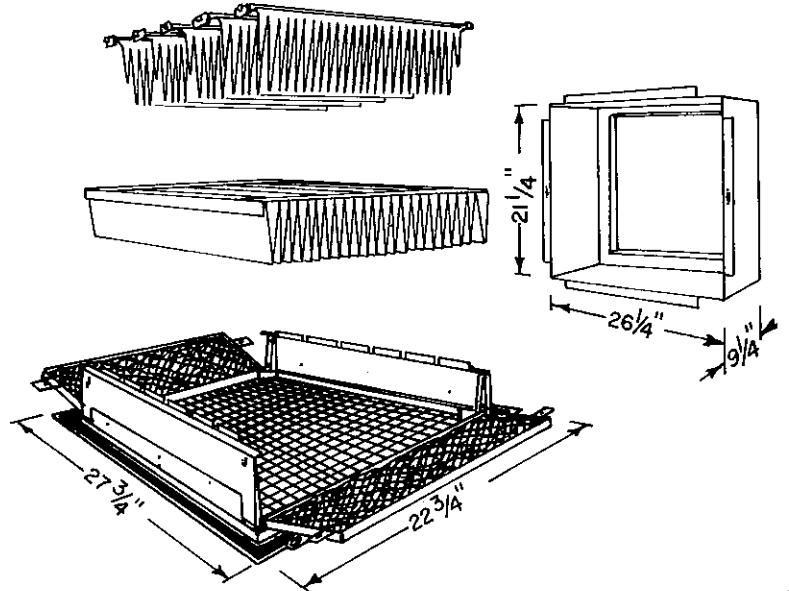


# PROCEDURE AND INSTALLATION INSTRUCTIONS

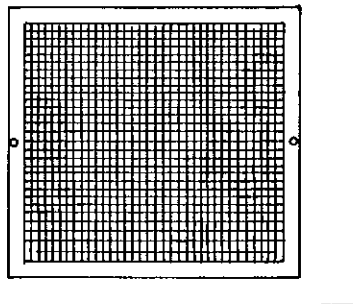
## *Aprilaire* GRILLE-MOUNT AIR CLEANER MODEL 2250

### **PARTS INCLUDED**

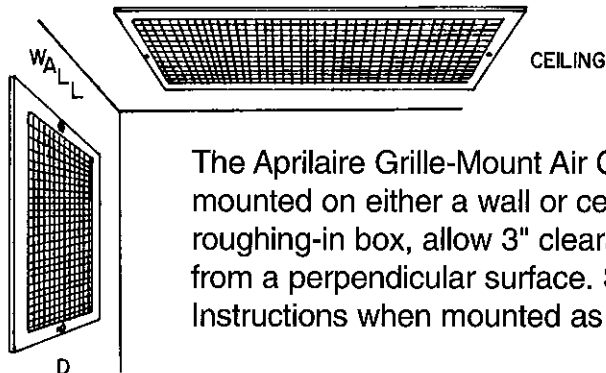
The Aprilaire Grille-Mount Air Cleaner consists of a roughing-in box  $21\frac{1}{4} \times 26\frac{1}{2} \times 9\frac{1}{4}$ " deep and flanged to take  $20\frac{1}{4} \times 25\frac{1}{4}$ " ductwork, plus an air cleaner assembly mounted to a  $22\frac{3}{4} \times 27\frac{3}{4}$ " grille.



WALL



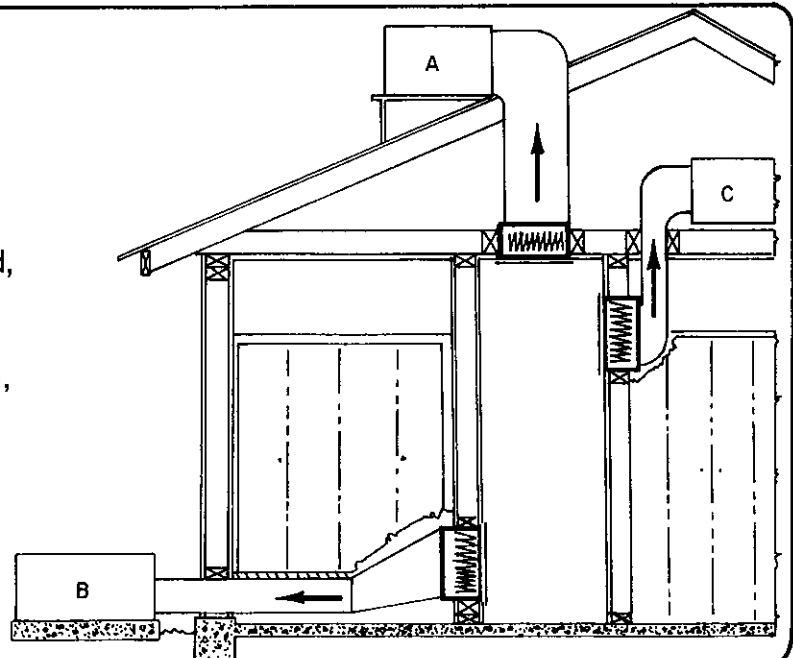
FLOOR



The Aprilaire Grille-Mount Air Cleaner can be mounted on either a wall or ceiling. When installing roughing-in box, allow 3" clearance for hand room from a perpendicular surface. See Supplementary Instructions when mounted as in D.

### **SYSTEM EXAMPLES**

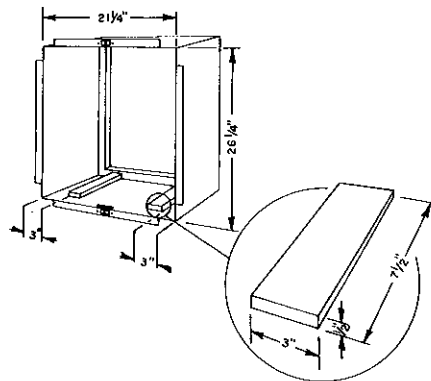
The Aprilaire Grille-Mount Air Cleaner can be attached to roof-mounted, slab-mounted, attic or closet air conditioning units. The return ductwork can take off directly from the  $20\frac{1}{4} \times 25\frac{1}{2}$ " connections (drawing A), via a transition to another size ductwork (drawing B) or via a turn into an appropriate size ductwork (drawing C).



## **SUPPLEMENTARY INSTRUCTION A**

If the Aprilaire Grille-Mount Air Cleaner is mounted with the 21 $\frac{1}{4}$ " side down, spacers should be attached on the bottom side of the roughing-in box for the air cleaner assembly to slide on. The spacers are to be  $\frac{1}{2}$ " thick, approximately 3" wide and 7 $\frac{1}{2}$ " long and are to be tight against the back flange. They should be located 3" in from the two sides.

Attach spacer to roughing-in box using flathead sheet metal screws, glue or other appropriate means.



## **SUPPLEMENTARY INSTRUCTION B**

For sidewall units, remove ceiling instruction disc from grille.

## **INSTALLATION INSTRUCTIONS**

1. To remove grille and filter assembly from roughing-in box:
  - a. Unscrew grille knobs.
  - b. Pull out grille and filter assembly approximately 3" until mounting catches are engaged.
  - c. Compress mounting catches and remove assembly.
2. Cut a 21 $\frac{3}{8}$  x 26 $\frac{3}{8}$ " hole into the wall or ceiling and fur in the opening to receive roughing-in box.  
NOTE: Allow 3" clearance for hand room to any adjoining perpendicular surface along the 21 $\frac{3}{8}$ " side. Allow a minimum of 1" on other sides for frame.
3. Place roughing-in box into opening, mark the areas under the fastener holes and remove roughing-in box. Cut out plaster or wallboard under marked areas (approximately  $\frac{1}{4}$ " x  $\frac{1}{4}$ " x 2") so that roughing-in box can be mounted flush.
4. Secure roughing-in box to studs or joists using nails or flathead screws. NOTE: Do not nail or screw directly in line with mounting catch hooks. Do not put screws or nails through flanges.
5. Connect ductwork from blower to 20 $\frac{1}{4}$  x 25 $\frac{1}{4}$ " flange of roughing-in box using straight duct, a transition or curved duct (drawings A, B, C). For abrupt turns, use turning vanes. Transition should preferably be 4" to the lineal foot.
6. Seal ductwork between roughing-in box and blower using duct tape.
7. Unsnap latches on both end panels. Install media according to detailed instructions on the back side of the replacement 201 media carton.
8. Insert air cleaner assembly into roughing-in box, compress safety catches. Tighten 2 grille knobs.

